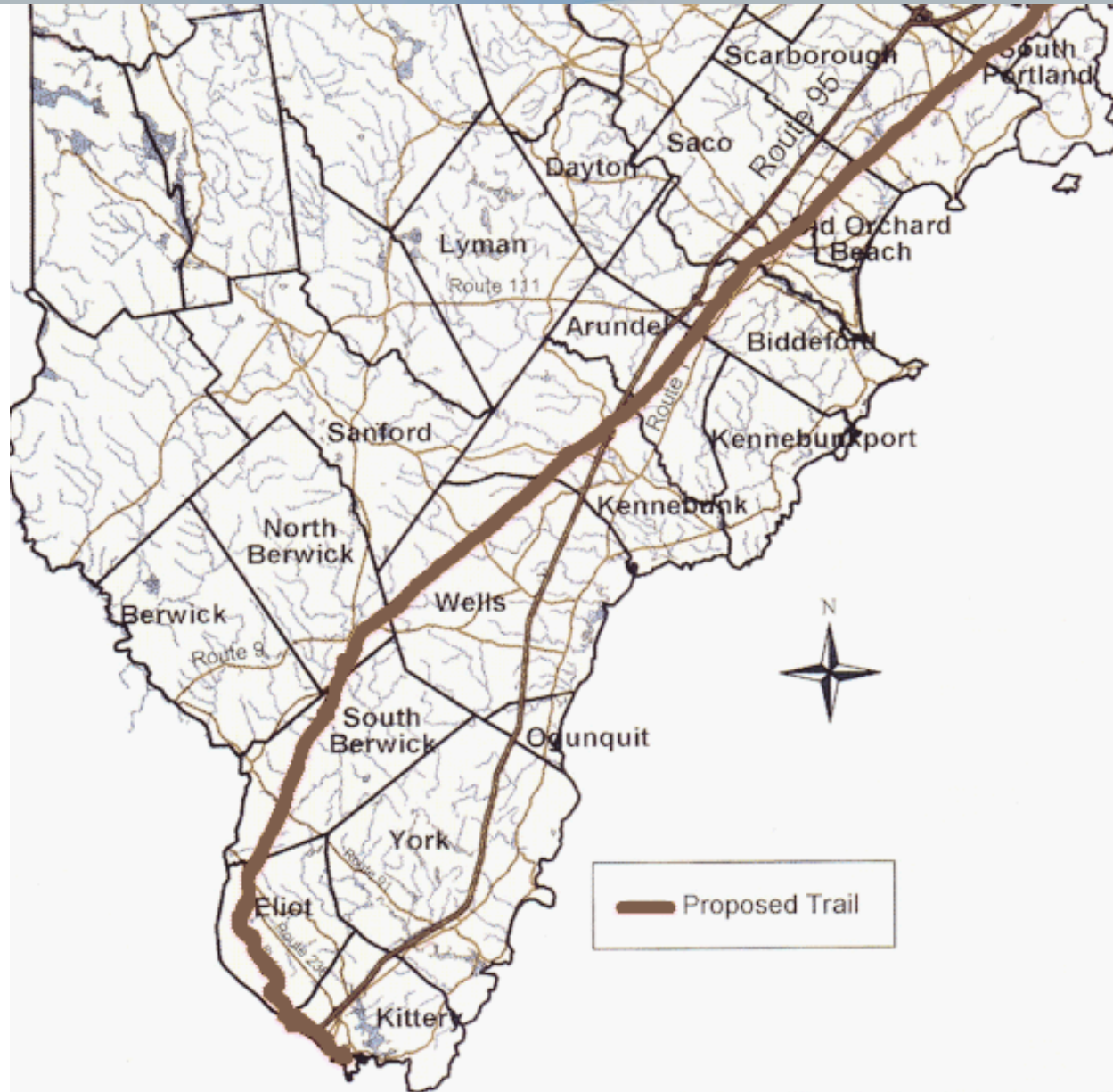




# SCARBOROUGH EASTERN TRAIL CONNECTOR

MaineDOT PIN 19386.00

# MAP OF PROPOSED EASTERN TRAIL CORRIDOR



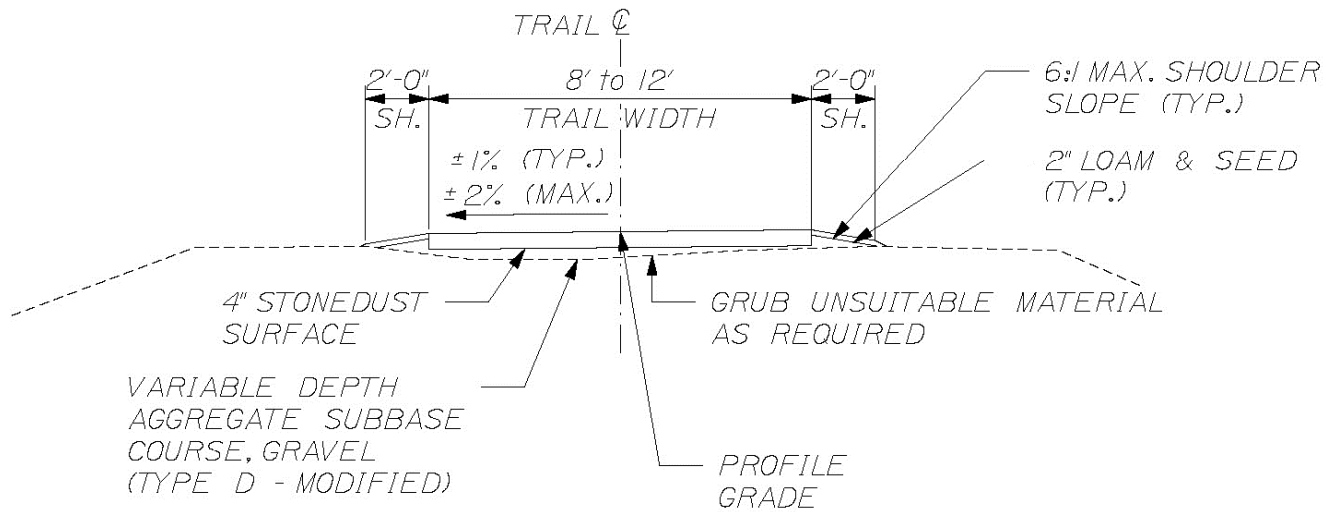
Prepared by Southern Maine Regional Planning Commission, August 1998

# SCARBOROUGH CONNECTOR

*TOWN OF SCARBOROUGH  
EASTERN TRAIL CONNECTOR  
NONESUCH RIVER TO WAINWRIGHT COMPLEX  
MAINEDOT WIN 019386.00  
GENERAL PROJECT LOCATION*

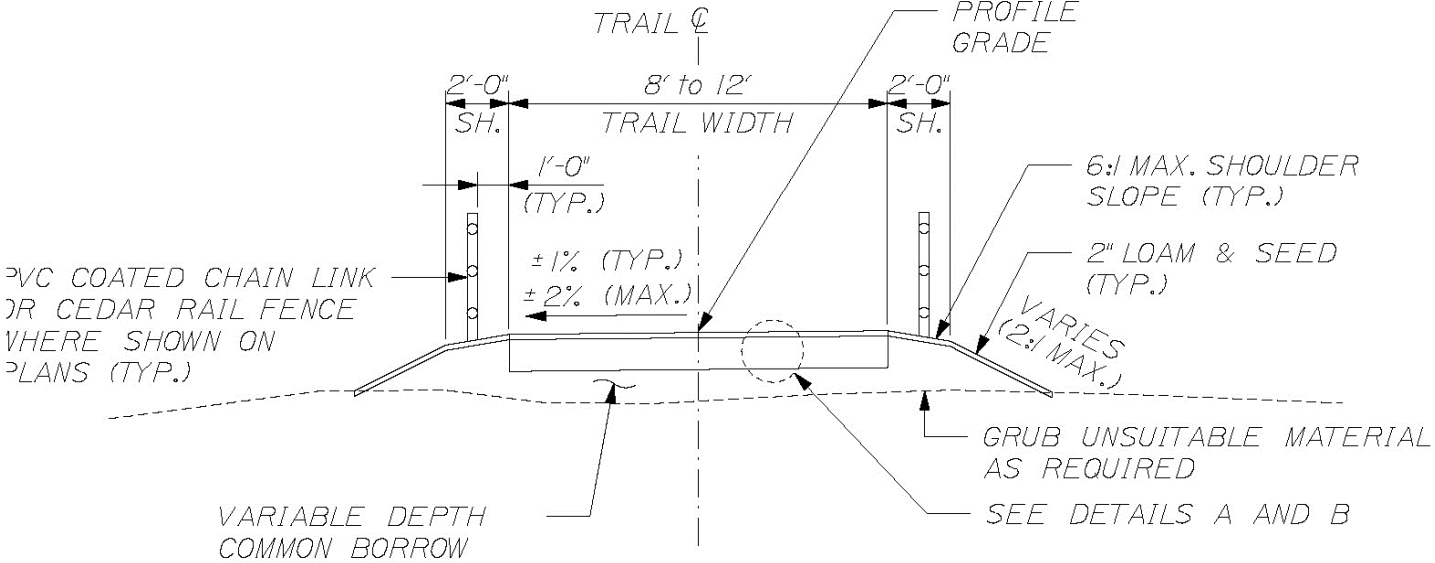


# Trail Typical Section



TYPICAL SECTION A  
N.T.S

# Trail Typical Section



TYPICAL SECTION B  
N.T.S

# Trail Typical Section



# Trail Typical Section



# Roadway Crossings

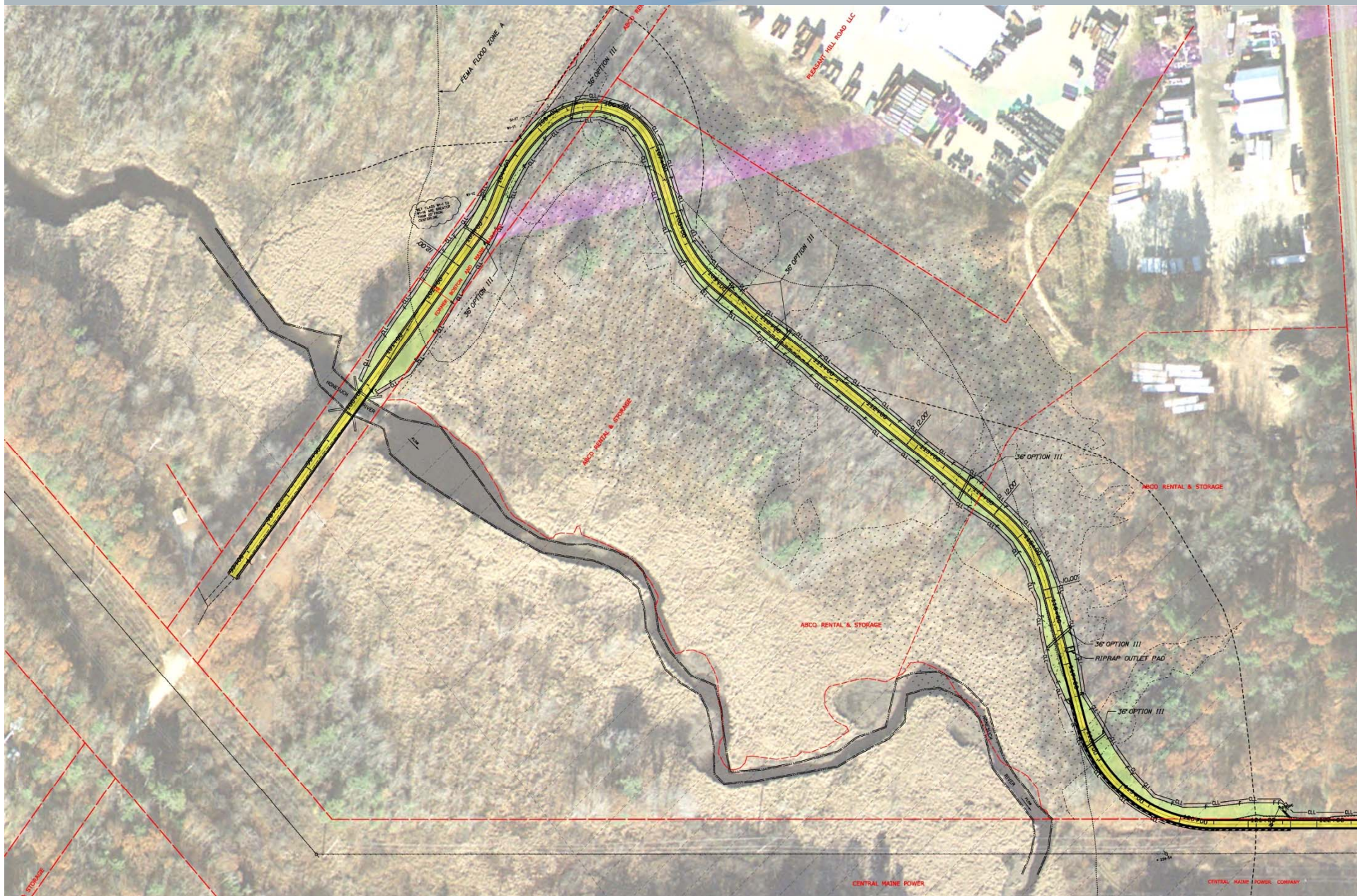




# Trail Typical Section



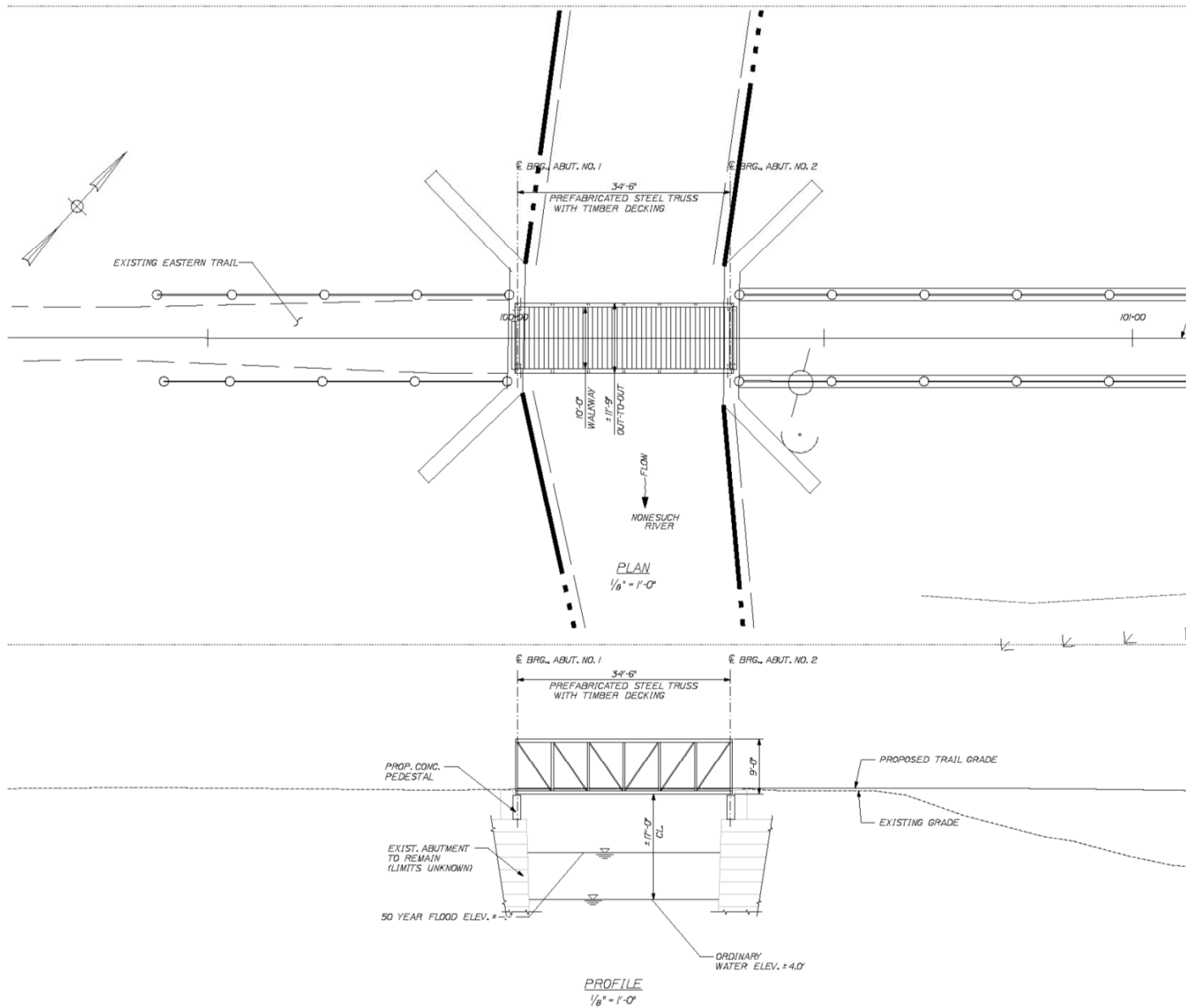
# Nonesuch River to Pan Am Crossing



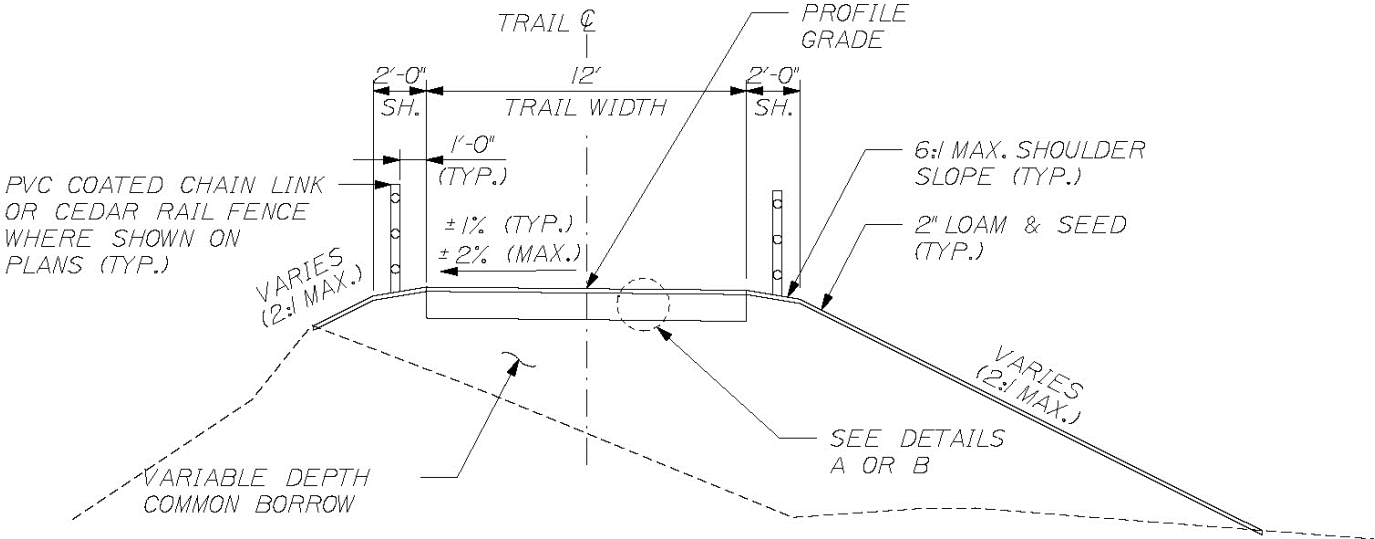
# Nonesuch River Crossing



# Nonesuch River Crossing



# Nonesuch River Crossing



TYPICAL SECTION AT NONESUCH CROSSING

N.T.S

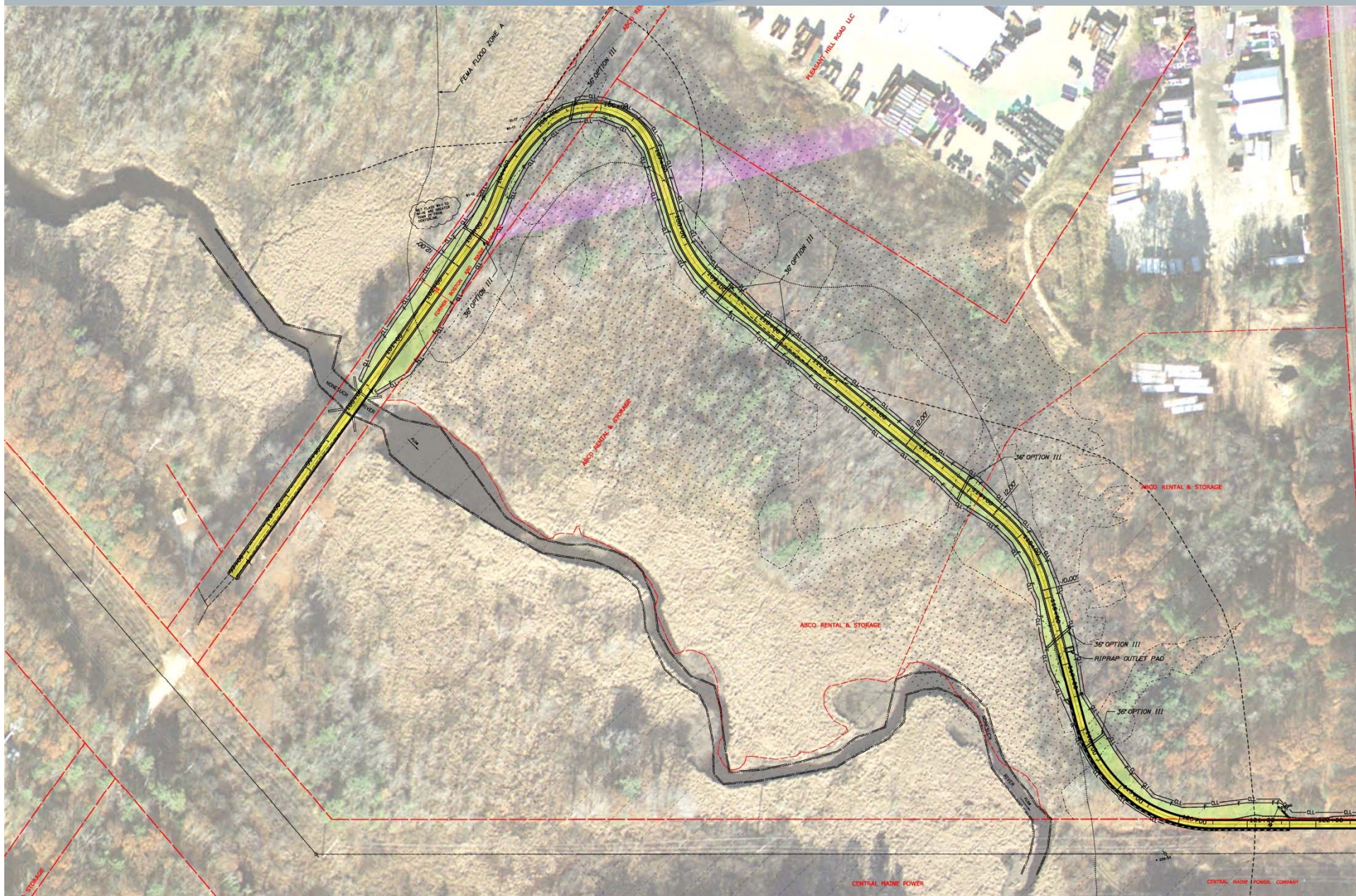
# Nonesuch River Crossing - Example



# Nonesuch River Crossing - Example

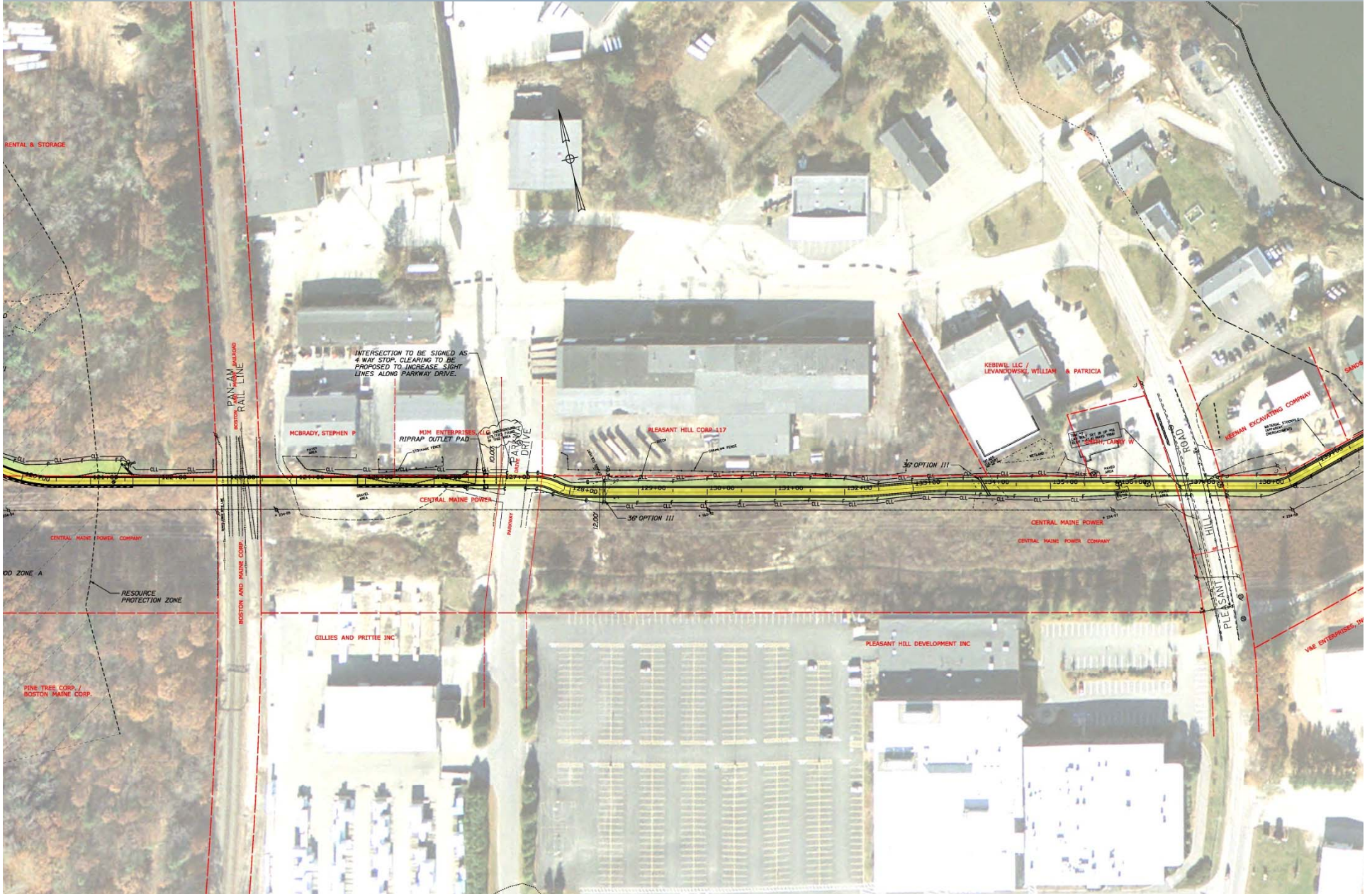


# Nonesuch River to Pan Am Crossing





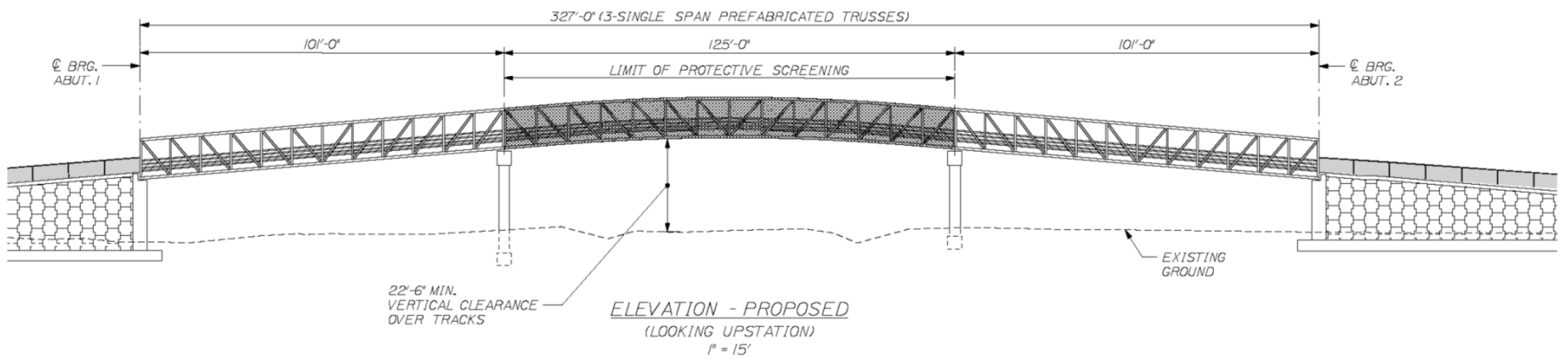
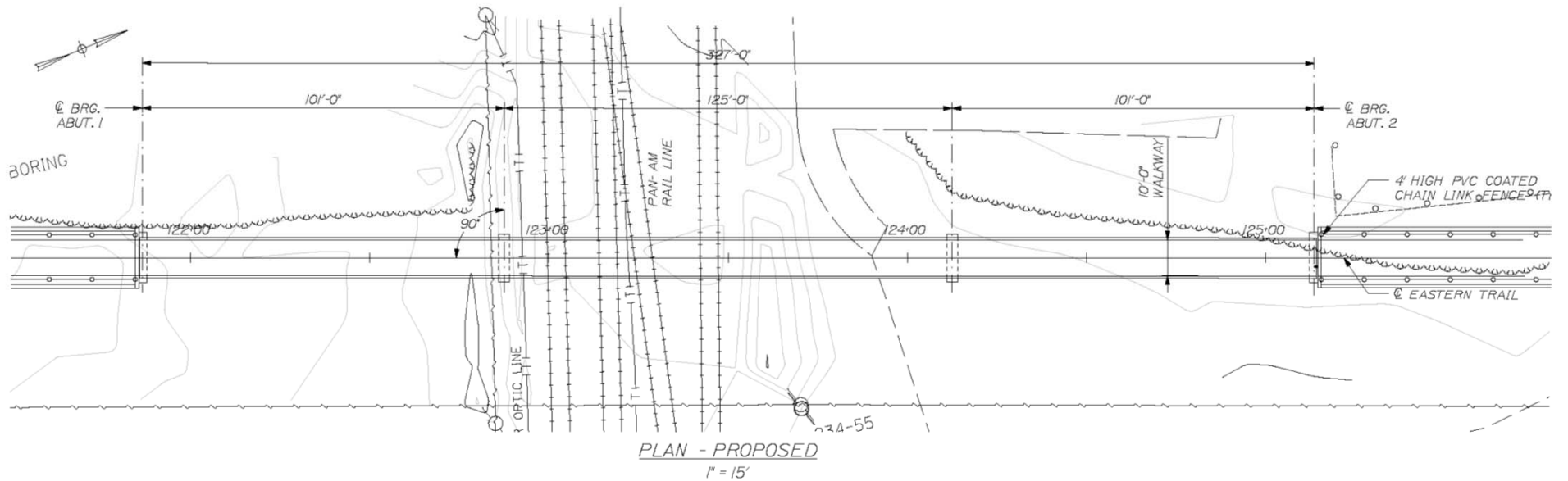
# Pan Am Crossing to Pleasant Hill Road



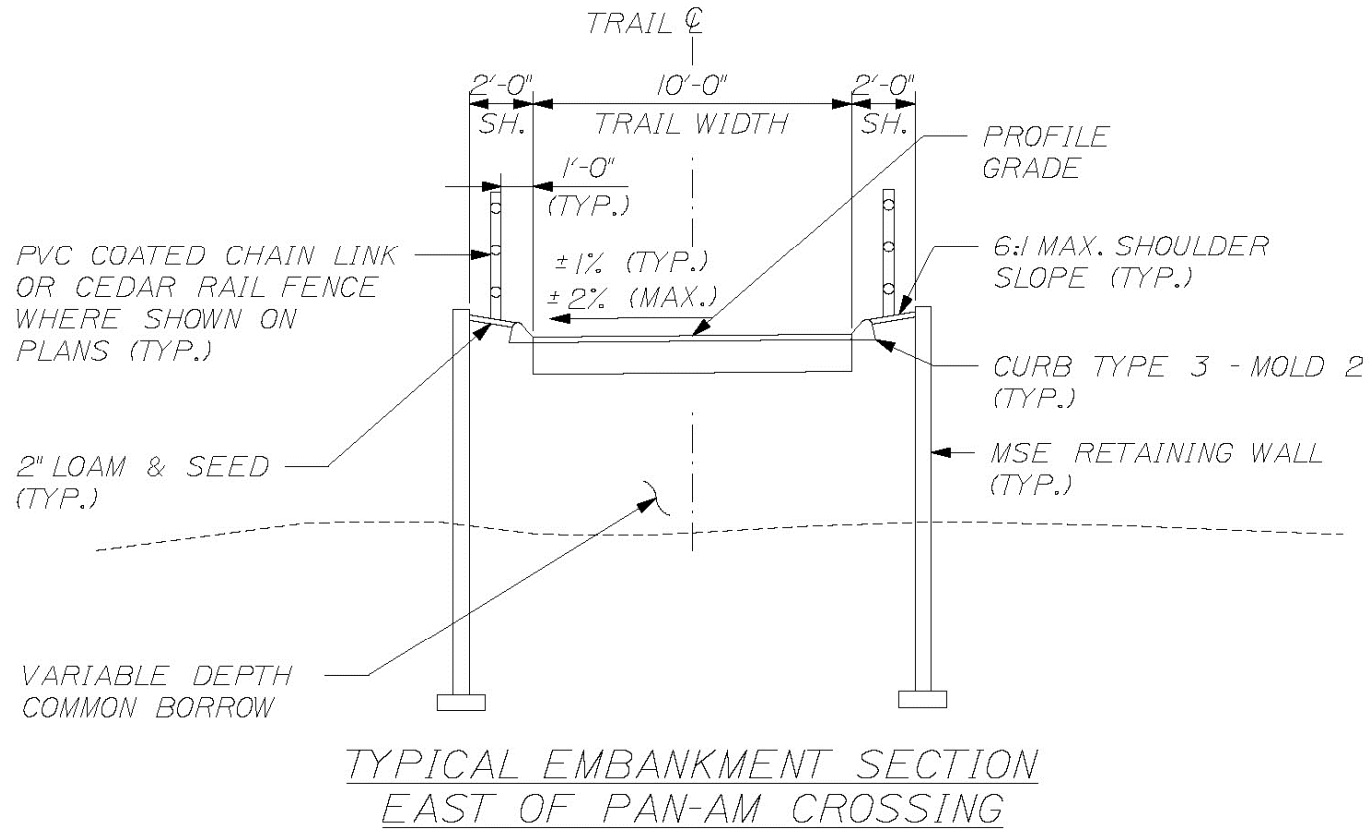
# Pan Am Railroad Crossing



# Pan Am Railroad Crossing



# Pan Am Railroad Crossing



N.T.S

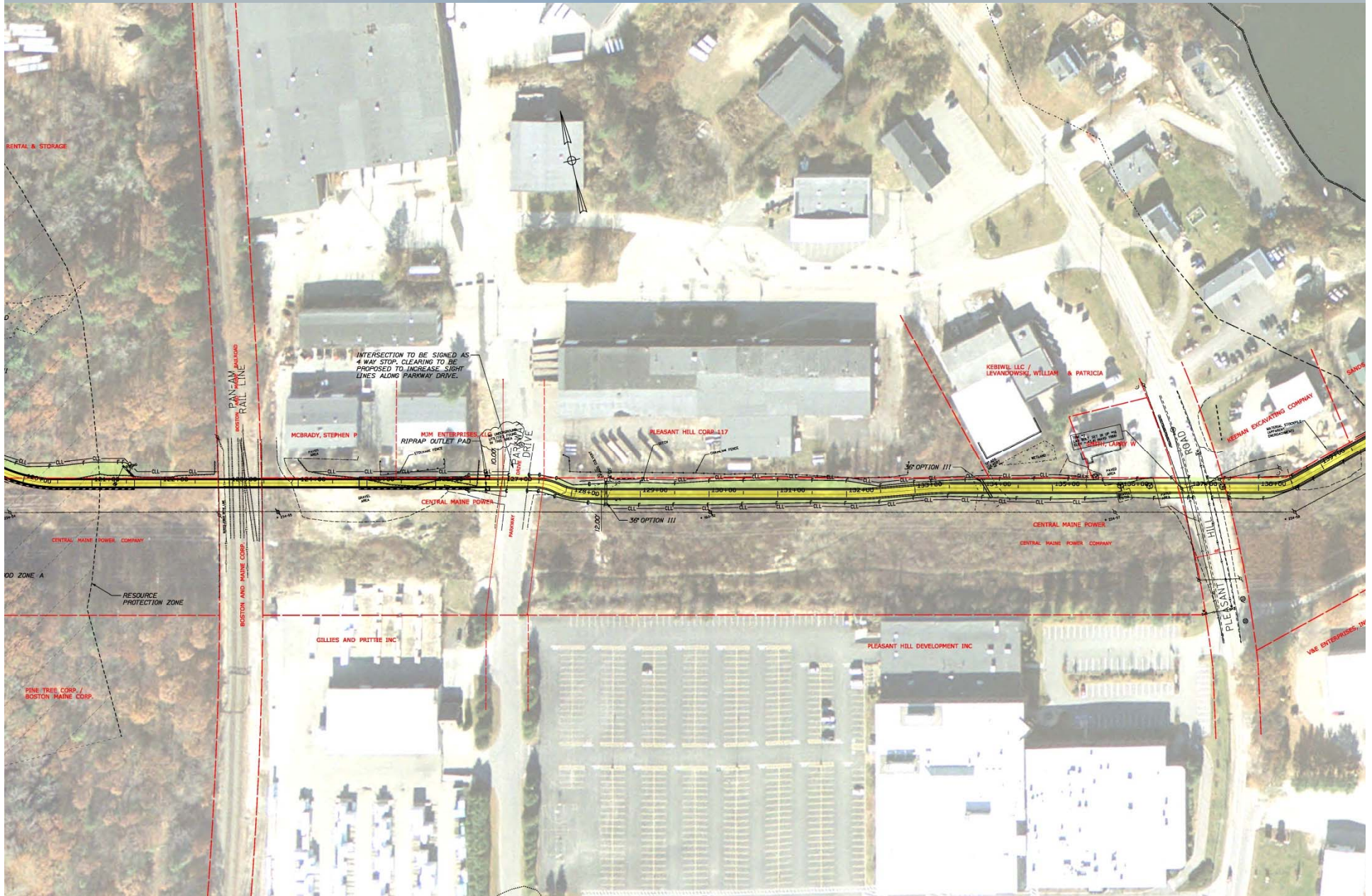
# Pan Am Railroad Crossing – Example



# Pan Am Railroad Crossing – Example



# Pan Am Crossing to Pleasant Hill Road



# Pleasant Hill Road to CMP Substation





# Pleasant Hill Road Crossing



# Pleasant Hill Road to CMP Substation



# CMP Substation



# Pleasant Hill Road to CMP Substation



# CMP Substation to Wainwright Complex



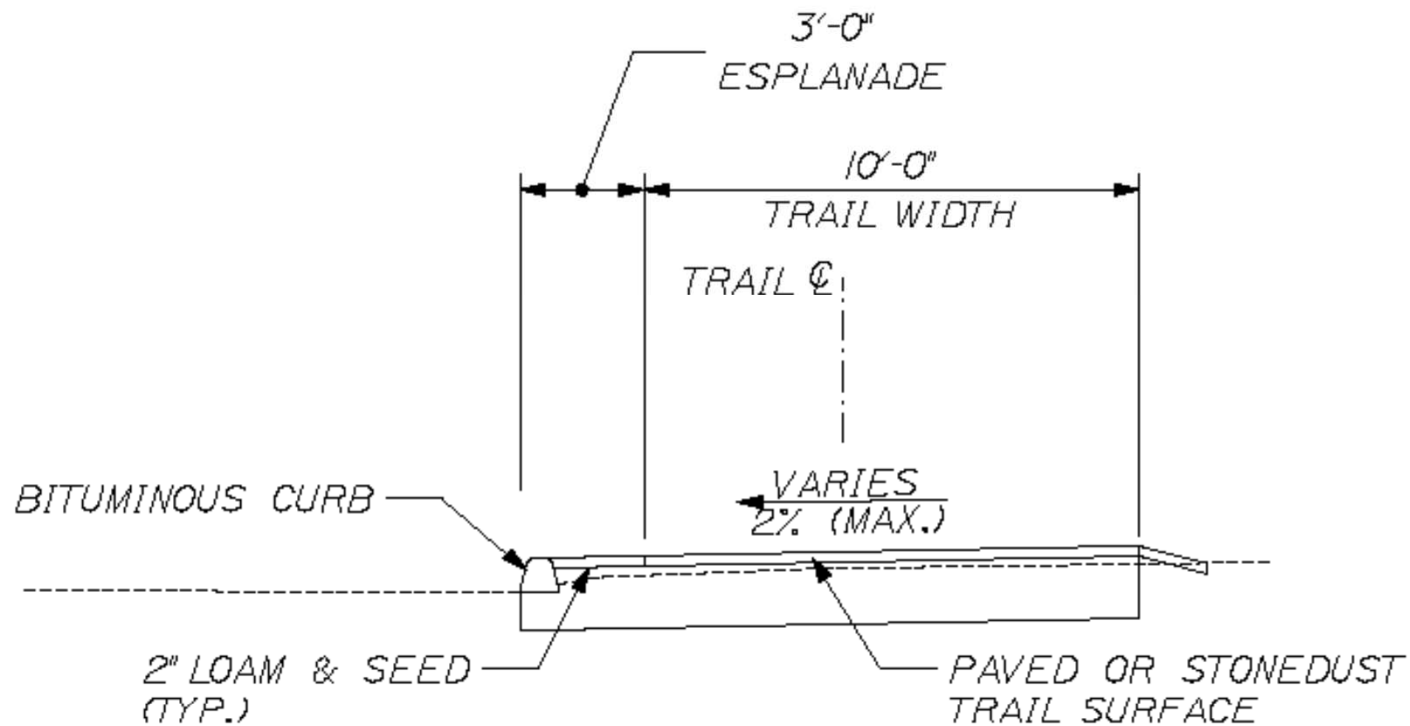
# CMP Substation to Wainwright Complex



# Wainwright Complex



# Alternate Alignment along Pond View Drive



TYPICAL SECTION AT  
POND VIEW DRIVE

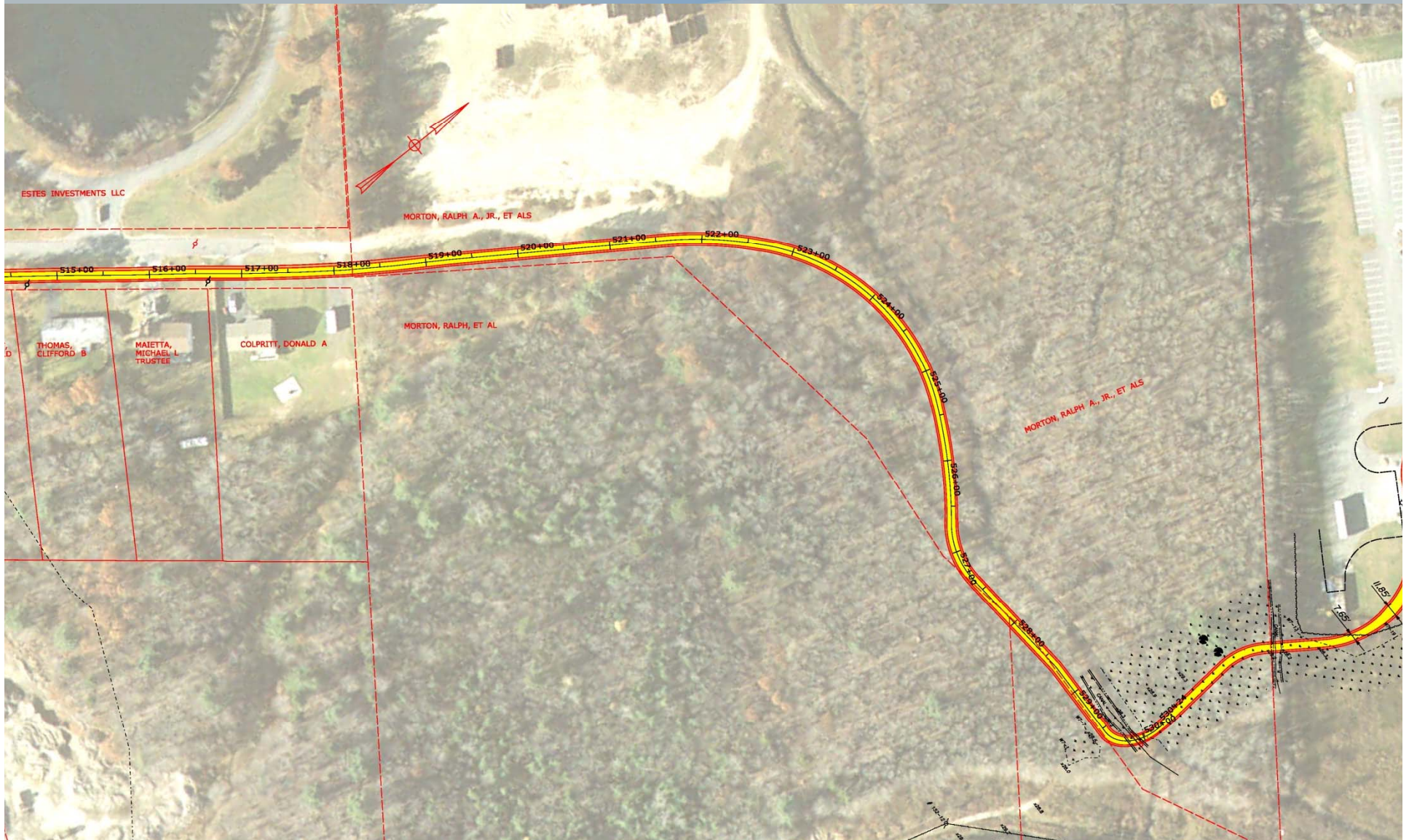
N.T.S



# Alternate Alignment along Pond View Drive



# Alternate Alignment along Pond View Drive



## Additional Items

- Trail Access
  - Wainwright Complex
  - South of Eastern Road
  - Appropriate Signage where needed
  
- Schedule
  - Preliminary design report in December
  - Acquiring funding for final design & construction
  - Construction date to be determined



# Questions?